



EMPATHETIC LEADERSHIP

Amplify Impact and Efficiency
Through a Leadership Culture
of Kindness and Connection



Keynote | Lecture | Workshop Topic

In our rapidly evolving business reality, characterized by escalating volatility, uncertainty, and complexity, it's common for leaders to feel overwhelmed. Faced with this challenge, many revert to outdated, ineffective behaviors—relying on past methods, avoiding responsibility, or resorting to 'management by fear.'

Failing to address these destructive reactions exacerbates the problem, leading to disengagement, increased turnover, and diminished success.

This lecture offers a solution: empowering leaders and managers to cultivate human-centric leadership skills essential for thriving in a high-tech, fast-paced, and disconnected environment.

In this heart-opening keynote, Linda Bjork shares leading-edge insights on how to become a leader with connection, meaning, and great impact.

Consciousness expert, and mind-trainer Linda Bjork shows audiences:

- *The fascinating science underpinning the effectiveness of heart-based leadership.*
- *Practical strategies for leveraging soft skills to achieve impactful results in tough environments.*
- *Insights into the crucial role empathy and kindness play in fostering team effectiveness, and the detrimental effects of misuse.*
- *The concept of the heart as our "5th brain" and its implications for achieving business success.*

EMPATHETIC LEADERSHIP

Amplify Impact and Efficiency Through a Leadership Culture of Kindness and Connection

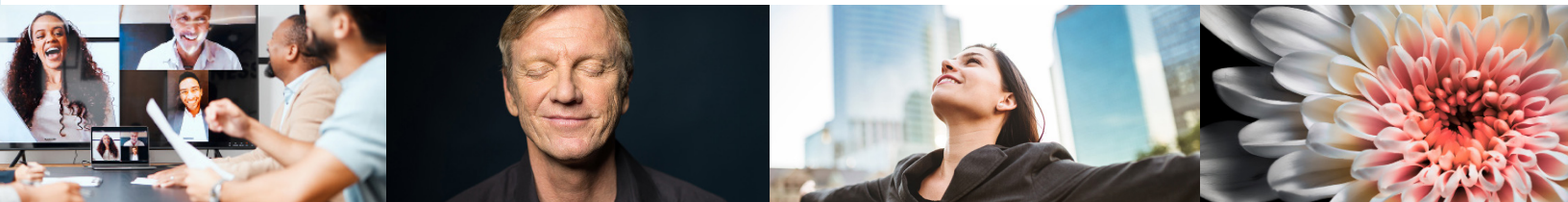
Let Your Teams or Audience:

- ☑ Explore the latest science behind the heart's role in effective leadership.
- ☑ Learn to demonstrate empathy and kindness assertively, avoiding misconceptions of weakness.
- ☑ Discover strategies for fostering meaningful relationships, whether in-person or remote, to enhance collaboration.
- ☑ Acquire efficient tools for demonstrating care and support, maximizing productivity.
- ☑ Gain insights into communication to boost engagement and loyalty while minimizing turnover.
- ☑ Uncover the path to becoming a beloved and impactful leader, inspiring exceptional team performance.

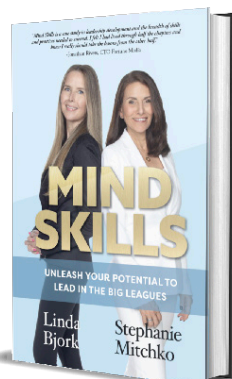
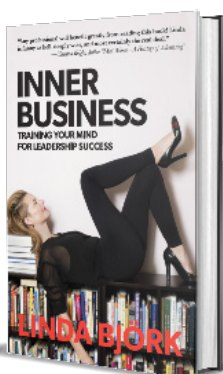
Empathy and kindness, commonly referred to as 'soft skills,' consistently rank among the top 10 traits essential for effective leadership.

In today's fast-paced digital era and amidst concerns over mental health and disconnected teams, there's a pressing need for a more human-centered leadership approach. Yet, many leaders struggle to implement it effectively. This lecture provides essential guidance to navigate this terrain, fostering well-being and enhancing performance outcomes.

Regardless of industry or organizational goals, leading with empathy and intentionality yields superior results. Join us to discover strategies for leveraging heart-based traits to create a sustainable culture, elevate leadership impact, and leave a lasting legacy.



EMPATHETIC LEADERSHIP is available as a conference keynote, company lecture series with QnA, or panel participation. Suitable for any industry, and all levels of management and leadership.



Linda Bjork, author of the influential leadership book "INNER BUSINESS" (2016), has further solidified her mind training expertise by co-authoring "MIND SKILLS" (2023) with Stephanie Mitchko, former CTO of Charter Communications, a Fortune 100 company.

url: www.lindabjork.org

email: team@bjorkbusiness.com

